

## ANNOUNCEMENTS AND EVENTS

**TODAY** *Welcome Visitors. We are glad that you chose to join us as we worship together our Lord and Savior Jesus Christ. Please let us know if we can pray for you or how we might help you.*

### **Memorial Flowers —**

*The family members of Stevie J. Ratkowski have dedicated the flowers in his memory.*

### **Family Promise —**

A big thank you to all who helped out with the homeless shelter here at Bethel Gilead last week. A thank you note is out on the announcement board from the families we served. Continue to look to serve those in need around us.

**THIS  
WEEK**

### **Small Groups —**

Small Groups are under way, but we are still looking to start some additional groups. *See pastor Jim or Pastor David if you are interested.*

**Monday 7pm**, BRONSON B; Host-Tim and Melissa Houtz, Contact-Scott Carpenter (517) 278-3376

**Wednesday 6pm**, Tijuana Missions; Host-Salano and Jennie deAraujo, Contact-Frank Cabrera (517) 369-9783

**Thursday 6:30pm**, Bethel Gilead; Church Fellowship Hall-kid friendly, Contact- Brandon Carpenter 989-277-5988

**Thursday 6:30pm**;BRONSON A; Host-Gordan and Verna Miller, Contact-Jim & Dee Eley (517) 369-6695

**COMING  
SOON**

### **Roller skating —**

Get some exercise and join the youth for an outing at [Skate Ranch](#), just south of Coldwater on Angola Rd. next sunday, Feb. 21, 2-4 PM.

**WAYS TO  
SERVE**

### **Love. Grow. Serve — Next Sunday**

- Worship Leader - Praise Team
- Special Music- Praise Team
- Chancel - Paul Alger
- Greeters - Tim and Christy Butters
- Church Nursery - Sally Davis, Zaron Parker
- Sunday Hr. Nursery - Char Kaufman
- Sound Room - Scott Carpenter, Kenny Bennett

## CONTACT INFORMATION:

[Senior Pastor Jim Erwin](#)  
517.238.8912

[Associate Pastor David Minard](#)  
419.276.2896

[Church Office](#)  
517.369.1588

## FEBRUARY 14, 2016

SERVICE: 9:35 AM

JUNIOR CHURCH: 10:10 AM

SUNDAY SCHOOL: 11 AM

ADULT EDUCATION: 11 AM

**BETHEL  
GILEAD**  
COMMUNITY  
CHURCH



## MISSION STATEMENT

“WE HONOR GOD THROUGH REGULARLY ASSEMBLING TOGETHER TO WORSHIP HIM AS LORD, STUDY AND OBEY HIS WORD, AND ATTEND TO THE NEEDS OF HIS PEOPLE. WHEN WE LEAVE, WE GO OUT COMMISSIONED AS CHRIST’S REPRESENTATIVES TO A NEEDY WORLD.”

876 BLOCK RD

• BRONSON MI. 49028

• (517) 369-1588

VISIT US AT [WWW.BETHELGILEAD.ORG](http://WWW.BETHELGILEAD.ORG)

# FEBRUARY 14, 2016

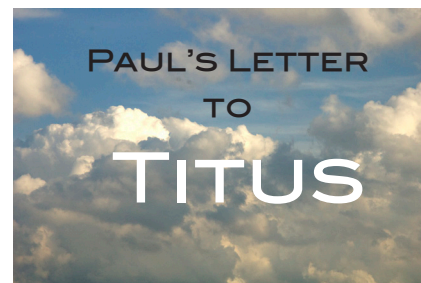
OFFERING PRAYER ..... Paul Alger  
GREETERS ..... Michelle Lake  
NURSERY (CHURCH) ..... Linda Penn, Deb Springer  
(SUNDAY SCHOOL)..... Linda Penn  
SOUND ROOM..... Brian Eley, Kenny Bennett

## ORDER OF WORSHIP SERVICE

WELCOME ..... David Minard  
OPENING WORSHIP ..... Tim Butters  
*The Love of God* ..... Hymn 67  
*Love Lifted Me* ..... Hymn 505  
*O' How I Love Jesus* ..... Hymn 529  
*My Jesus, I Love Thee* ..... Hymn 364  
*O' How He Loves You and Me*..... Hymn 513  
OFFERING ..... Paul Alger  
*Special Music*..... Kenny Bennett  
JUNIOR CHURCH (TODDLERS-GRADE 5)..... Dismissal  
MESSAGE ..... Jim Erwin  
*Micah 6:18* ..... Chorus

## CHRISTIAN ED.

ADULT ED. .... Three Classes (see bulletin)  
TODDLERS ..... Sherry Neesley  
GRADES 1-2..... Lisa Franks  
GRADES 3-5 ..... Brian DeBolt  
YOUTH (6TH-12TH GRADES)..... Danielle Tucker



## GOOD FOR YOU

[TITUS 3:14](#)

THE GOOD WORKS  
OF CHRIST

### INTRODUCTION:

Our people must learn to devote themselves to doing what is good... ([Titus 3:14](#))

### I. A “GOOD” CHURCH: [Titus 3: 1-2, 8, 14](#)

- the music?
- the minister?
- the people?
- the programs?
- the facility?

### II. THE KEY FACTOR = CONGREGATIONAL HEALTH

- A healthy body a healthy Church ([Rom. 12:4-5](#))
- What are the indicators of health?
- What indicates disease?

### III. GOOD FOR YOU – GOOD FOR US!

<sup>11</sup>*For the grace of God has appeared that offers salvation to all people.*

<sup>12</sup>*It teaches us to say “No” to ungodliness and worldly passions, and to live self-controlled, upright and godly lives in this present age, <sup>13</sup>while we wait for the blessed hope—the appearing of the glory of our great God and Savior, Jesus Christ, <sup>14</sup>who gave himself for us to redeem us from all wickedness and to purify for himself a people that are his very own, eager to do what is good. ([Titus 2:11-14](#))*

### APPLICATION:

*He has shown you, O man, what is good.*

*And what does the Lord require of you?*

*To act justly and to love mercy*

*and to walk humbly with your God.*

[Micah 6:8](#)



## A Call to Prayer

### Recent additions:

- Gary Ratkowski's brother, Steve, passed away earlier this week. Pray for Steve's family and the Ratkowski's.
- Greg and Nikki Maertin's son in-law, Sean Duncan, came through surgery for cancer Wednesday. There were positive results but continue to pray for recovery.
- Breana Dules, had a second brain tumor removed and will start radiation treatment. Breana is a Bronson graduate.
- Lita McCollum, Mary Jo Evans' niece, is diagnosed with lung cancer.
- [Garth Wilber](#) died this past Wednesday. The memorial service is Monday, 11 AM at the Dutcher Funeral Home in Bronson.
- Pat Neesley has recently been diagnosed with lung cancer and presently considering treatment options.
- Becky Gilroy has been diagnosed with esophageal cancer. She is currently under treatment.
- Dennis Voss has been removed from a ventilator and remains stable
- Russ Heckathorn - lung cancer, surgery postponed.

### Continue to remember those in need:

- Sue Craft is home recovering from back surgery.
- Marjorie Keeslar is recovering from a fall. She is at [Maple Lawn Medical Care Facility](#), Coldwater and is receiving visitors.
- Shirley Bogen is at Drews Place room #7. She will be revisiting The University of Michigan hospital for the next step.
- Earl Bower-health concerns
- Joe Troyer - brain cancer
- Carmel Roberts - healing
- Rick Wilcox - Alzheimer, health is failing
- Randy Dudley - improved health
- Barry Hyliard, Janet's son suffering from malignant brain cancer and undergoing Chemo treatments

February 14, 2016

## Adult Ed: Winter Session Begins January 24

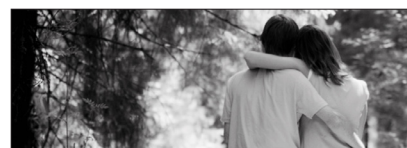


### How to Stand Firm in the End Times

A study of 1-2 Thessalonian, using the Precepts Inductive study method.

Teacher: Kim Erwin

Location: Fellowship Hall



### Communication: Key to Strong Marriage

This class will use Family Life materials to help couples identify and remove barriers to good communication, better

understand each other and deal with tensions as they arise.

Teacher: Jim Erwin

Location: Blanket Maker Room



### Leadership:

### Build for Capacity God's Way

This class will look at many of the books on leadership, both Christian and secular. We will compare different views, pulling from personal experience and comparing it to God's compass of true north. This class will also serve as an opportunity to look at and to define who we are as a faith community.

Teacher: David Minard

Location: Overflow Room



## A Call to Prayer

### Recent additions:

- Gary Ratkowski's brother, Steve, passed away earlier this week. Pray for Steve's family and the Ratkowski's.
- Greg and Nikki Maartin's son in-law, Sean Duncan, came through surgery for cancer Wednesday. There were positive results but continue to pray for recovery.
- Breana Dules, had a second brain tumor removed and will start radiation treatment. Breana is a Bronson graduate.
- Lita McCollum, Mary Jo Evans' niece, is diagnosed with lung cancer.
- [Garth Wilber](#) died this past Wednesday. The memorial service is Monday, 11 AM at the Dutcher Funeral Home in Bronson.
- Pat Neesley has recently been diagnosed with lung cancer and presently considering treatment options.
- Becky Gilroy has been diagnosed with esophageal cancer. She is currently under treatment.
- Dennis Voss has been removed from a ventilator and remains stable
- Russ Heckathorn - lung cancer, surgery postponed.

### Continue to remember those in need:

- Sue Craft is home recovering from back surgery.
- Marjorie Keeslar is recovering from a fall. She is at [Maple Lawn Medical Care Facility](#), Coldwater and is receiving visitors.
- Shirley Bogen is at Drews Place room #7. She will be revisiting The University of Michigan hospital for the next step.
- Earl Bower-health concerns
- Joe Troyer - brain cancer
- Carmel Roberts - healing
- Rick Wilcox - Alzheimer, health is failing
- Randy Dudley - improved health
- Barry Hyliard, Janet's son suffering from malignant brain cancer and undergoing Chemo treatments

February 14, 2016

## Adult Ed: Winter Session Begins January 24

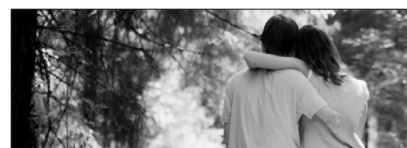


### How to Stand Firm in the End Times

A study of 1-2 Thessalonian, using the Precepts Inductive study method.

Teacher: Kim Erwin

Location: Fellowship Hall



### Communication: Key to Strong Marriage

This class will use Family Life materials to help couples identify and remove barriers to good communication, better

understand each other and deal with tensions as they arise.

Teacher: Jim Erwin

Location: Blanket Maker Room



### Leadership:

### Build for Capacity God's Way

This class will look at many of the books on leadership, both Christian and secular. We will compare different views, pulling from personal experience and comparing it to God's compass of true north. This class will also serve as an opportunity to look at and to define who we are as a faith community.

Teacher: David Minard

Location: Overflow Room