



2015 Directory

1996- September

Pastor Jim Erwin accepted the position as part-time pastor. He was a former missionary in Argentina with his wife Kim and three children..



2000-2018 Bethel Gilead Community Church as experienced many changes throughout the last twenty years. Above are just a few.

2003-2007

Expansion to facility, which included two phases. Phase one: sanctuary, narthex, fellowship hall and restrooms. Phase two: renovation of old church into classrooms, library, nursery, office and youth room.

1997- October.

Pastor Jim leads Church retreats at Camp Luther. From retreats the congregates creates and adopts Mission Statement with defined Priorities. A wood plaque was carved to display in the foyer.

1996-99 Church sees growth from average 39 to 84, and increase disciple making efforts. Small Groups, adult and children classes are added. Youth group created by annual college interns.

CAMA Church joins Coldwater Area Ministerial Association and participate in area events: Way of the Cross, BOLD Faith, pastors' annual retreat, National Day of Prayer and other gatherings.



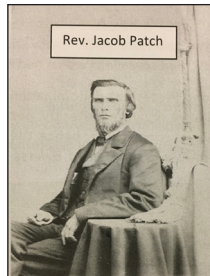
Ministry Teams- 2000-2018

- Missions:** Currently send support to 14 missionaries world wide.
Budgets 10 percent of church giving toward missions
Becomes host church for Family Promise
Short-term mission trips: New Guinea, Kenya, and Tijuana
- Outreach Team** with annual events to reach our community
Annual hog roast and hayride held each fall, community participation (county fair, Polish Festival...)
Movie Nights, Church in the Park, special speakers
- Fellowship Team** sponsors Linger Longers, potlucks and assists with special events.
- Worship Team** provides a variety of worship styles from traditional to contemporary music. Schedules special music.
- Women's Fellowship** provide our youth with local scholarships and oversees dinners or luncheons for weddings, funerals and children's annual bible camp.
- Youth Council** provide direction for youth program.
activities, chaperons, overnight trips.
- Maintenance Team** oversees facility and grounds
2003 Phase one building expansion
2006 Phase two renovation of old church
2010 Additional parking to both north and south sides
- Council** oversees the financial of the church and hiring of staff
2003 Hired first youth directors
2005 Phase one of building expansion paid in three years
2008 Hired part-time administrative secretary
2015 Hired first associate pastor



MISSION STATEMENT

"WE HONOR GOD THROUGH REGULARLY ASSEMBLING TOGETHER TO WORSHIP HIM AS LORD, STUDY AND OBEY HIS WORD, AND ATTEND TO THE NEEDS OF HIS PEOPLE. WHEN WE LEAVE, WE GO OUT COMMISSIONED AS CHRIST'S REPRESENTATIVES TO A NEEDY WORLD."



1865: Civil War Ends.
May 6, Jacob Patch of Orland
Indiana, commissioned to
organize church in East Gilead,
Branch Co. Michigan

1865- July Named
Presbyterian Church of East
Gilead

1868- Feb. 20.
Union Congregational Church
of Gilead and Bethel, meeting
in homes and schools

1872- A Period of Decline

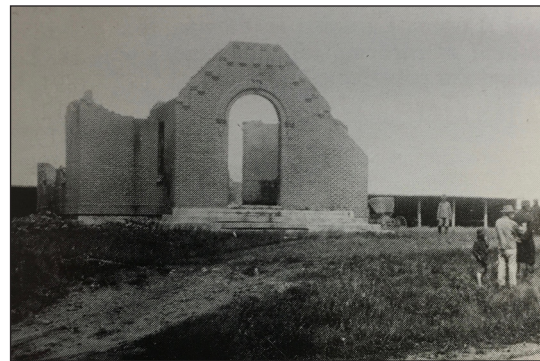
1874- An Act of Faith
Luman P. Rose, of Orland Congregational Church
is commissioned as first full-time minister

1882- Feb. 9, Dedication service

1882- January construction
completed. Cost \$1,537.00

1881- July 20. Cornerstone laid

Rev. Charles Carrich
1880- Oct. 23.



Lightening strike destroyed building in a fire.

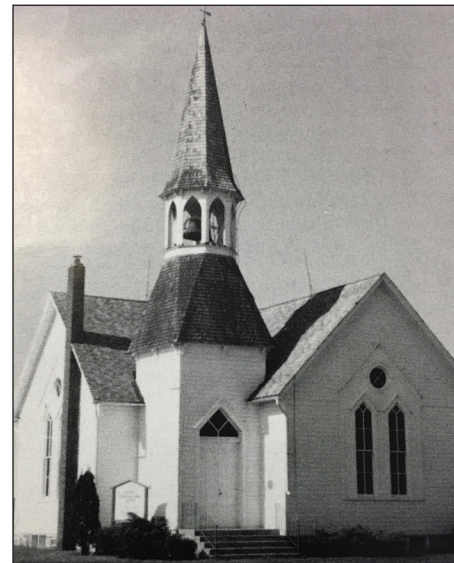
1921- May 23

1922- Jan. 15.
Rebuilt structure and rededicated.
Rev. C. A. Cutler is pastor

1920-1960's Ministers shared with Kinderhook Congregational Church
and student minsters from Grand Rapids, Michigan.

1881 Cornerstone Capsule-

The following items were placed behind the cornerstone: a church manual, brief history of the church, Original draft of articles of faith adopted 2/20/1867; two copies of the Advance, one copy of Congregationalist, various other papers, brief account of the different churches, Sabbath schools and societies in the township of Gilead, two copies of Branch County Republican, two copies Detroit Post and Tribune, four copies of Hillsdale Herald, one Harpers Weekly, one S.S. Messenger (English & German), Commencement Annual of Oberlin, one Cook's Sunday school Lesson Quarterly, one New Testament Bible Banner, cards from different people, four coins, etc.



Bethel United church of Christ (Cranson)
and Union Congregational Church united
but worship remained at both locations

1964- August

1965 - September
Named changed to Bethel Gilead
Congregational Church

1967 - Rev. Thomas Rebentisch
led worship in both buildings and
suggests merging to one location.



1975- June 1. Improvements dedicated.

1973- Building additional classrooms,
larger narthex and entrance. (\$17,942.19)

1972- January
Dr. Kenneth B. Seeley comes from Kalamazoo
to minister to the congregation.

1989- September.
Rev. Whitney Brown

1994- August.
Rev. Clark Trowbridge

1970- Two churches merged to become Bethel-Gilead
United Church of Christ. Services held at East Gilead.

